

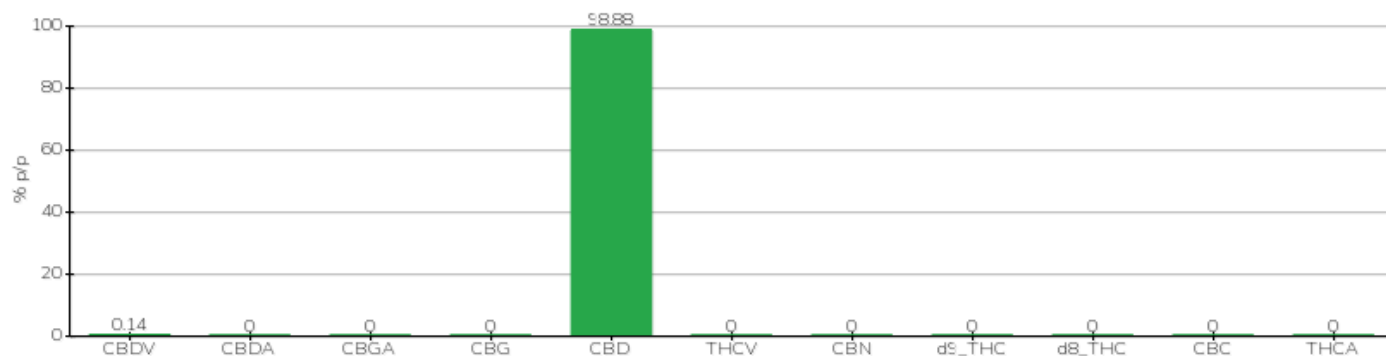
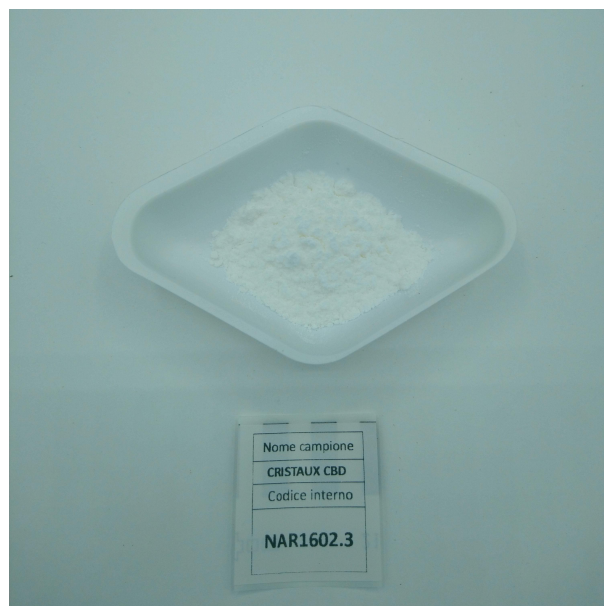
# TECHNICAL REPORT

<b>Committente</b>	NATURA VERDEA S.r.l.	<b>Etichetta</b>	CRISTAUX CBD
<b>Data accettazione</b>	16/02/2022	<b>Tipologia campione</b>	semilavorato
<b>Data analisi</b>	16/02/2022	<b>varietà</b>	Fedora 17
<b>Codice riferimento interno</b>	NAR1602.3	<b>N. Cartellino</b>	B
<b>Metodica analitica</b>	HPLC - HS - Rev.2	<b>Campionamento</b>	a cura del cliente
<b>Lotto</b>	B		

**Note**

Parametro	% p/p	Metodo
CBDV	0.14%	HPLC-UV
CBDA	<0.01%	HPLC-UV
CBGA	<0.01%	HPLC-UV
CBG	<0.01%	HPLC-UV
CBD	98.88%	HPLC-UV
THCV	<0.01%	HPLC-UV
CBN	<0.01%	HPLC-UV
d9_THC	<0.01%	HPLC-UV
d8_THC	<0.01%	HPLC-UV
CBC	<0.01%	HPLC-UV
THCA	<0.01%	HPLC-UV
<b>CBD TOTALE</b>	<b>98.88%</b>	<b>CALCOLATO</b>
<b>CBG TOTALE</b>	<b>&lt;0.01%</b>	<b>CALCOLATO</b>
<b>THC TOTALE</b>	<b>&lt;0.01%</b>	<b>CALCOLATO</b>

CAMPIONE ANALIZZATO: Fedora 17(3.00gr)



Pineto

21/02/2022